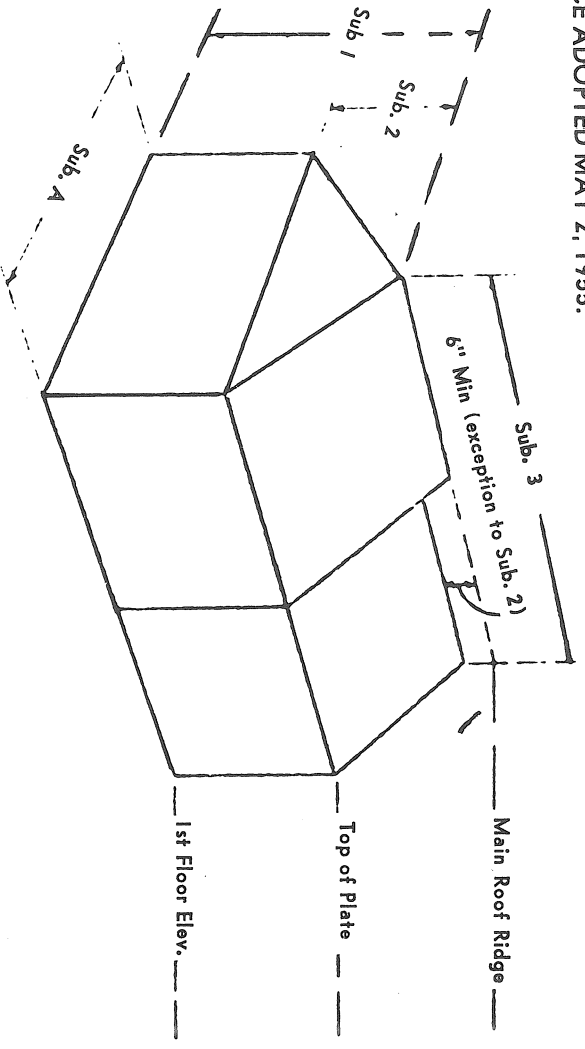
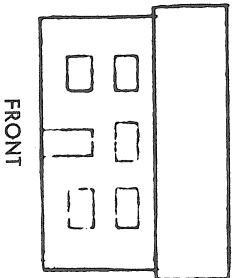


SECTION 2 OF AN ORDINANCE ADOPTED MAY 2, 1955.

SUBDIVISIONS 1 TO 4.
(DIMENSIONS REFERRED TO)

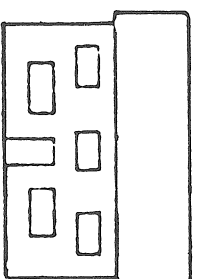


SUBDIVISION 5.
TYPICAL ELEVATION



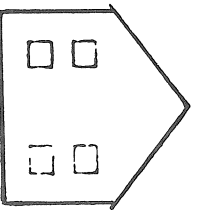
FRONT

"Relative location of windows in the front elevation or in each of both side elevations with respect to each other and with respect to any door, chimney, porch or attached garage in the same elevation."

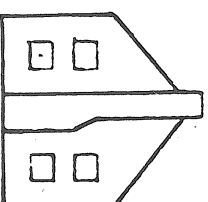


FRONT

EXAMPLE OF VARIATION ACCEPTED



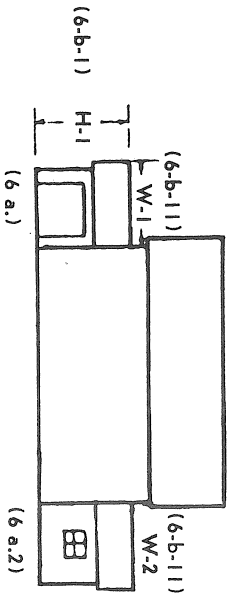
SIDE



SIDE

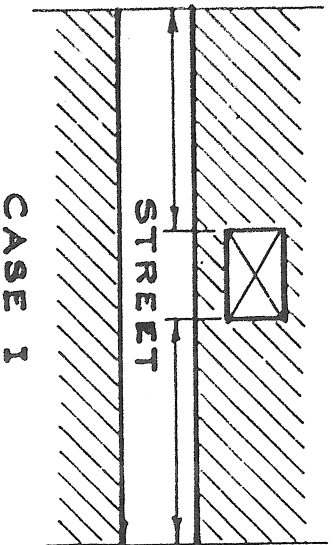
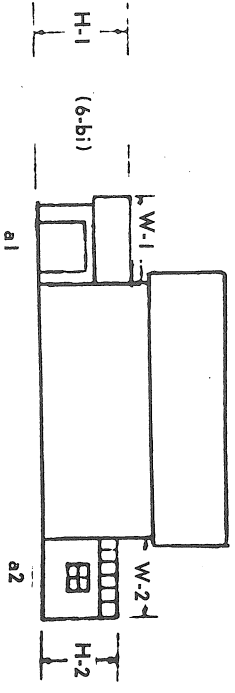
SUBDIVISION 6.

TYPICAL FRONT ELEV.

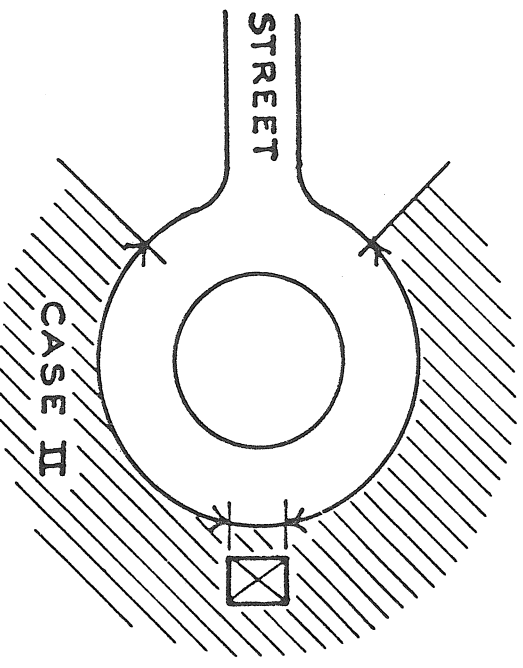


NOTE: Condition 6-b has been satisfied in this example but 6-a has not been satisfied. A reversal of elements would be required for 6a.

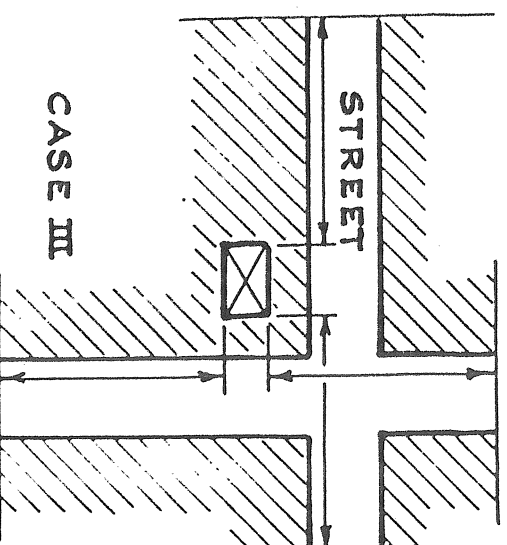
EXAMPLE OF VARIATION REQUIRED



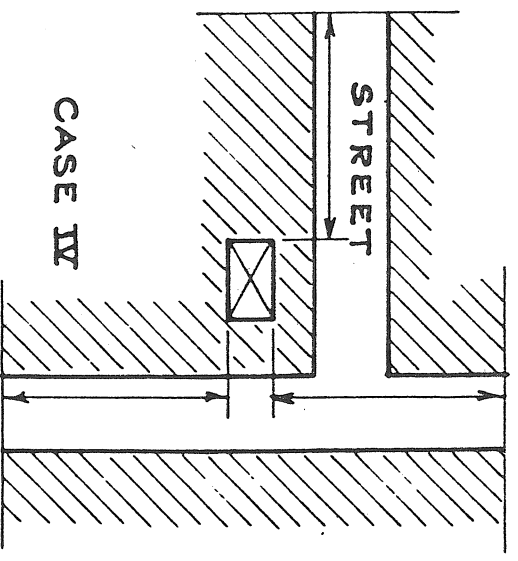
CASE I



CASE II



CASE III



CASE IV