

212 East Post Road

White Plains, New York



Retail Space in Desirable Downtown Location!

As exclusive agents, we are pleased to offer the following space for lease:



Available Space:

Lower Level 1,742 RSF

Main Level 962 RSF

Total Available 2,704 RSF

Basement Level 1,760 RSF

Rental Rate:

Upon Request

Possession:

Immediate

Term:

Negotiable

Demographics

	<u>1 Mile</u>	<u>3 Mile</u>	<u>5 Mile</u>
Population	35,829	104,127	207,117
Avg HH Income	\$76,226	\$121,539	\$143,457

- ◆ Great frontage and very visible
- ◆ Space includes basement
- ◆ Located directly off Mamaroneck Avenue and within walking distance to many shops and restaurants
- ◆ Off South Broadway across from Sports Authority, Morton's Steakhouse and Crowne Plaza
- ◆ Close to Nordstrom, Neiman Marcus and The Westchester
- ◆ On-site parking available
- ◆ Traffic Count: 17,397 cars daily

Patricia A. Valenti Principal 203.531.3601 pvalenti@ngkf.com

**Newmark Grubb
Knight Frank**

Retail

680 Washington Boulevard, 8th Floor, Stamford, CT 06901

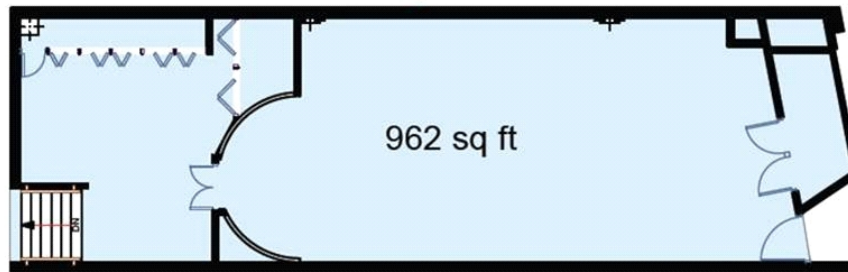
Procuring broker shall only be entitled to a commission calculated in accordance with the rates approved by our principal only if such procuring broker executes a brokerage agreement acceptable to us and our principal and the conditions as set forth in the brokerage agreement are fully and unconditionally satisfied. Although all information furnished regarding property for sale, rental, or financing is from sources deemed reliable, such information has not been verified and no express representation is made nor is any to be implied as to the accuracy thereof and it is submitted subject to errors, omissions, change of price, rental or other conditions, prior sale, lease or financing, or withdrawal without notice and to any special conditions imposed by our principal.

212 East Post Road

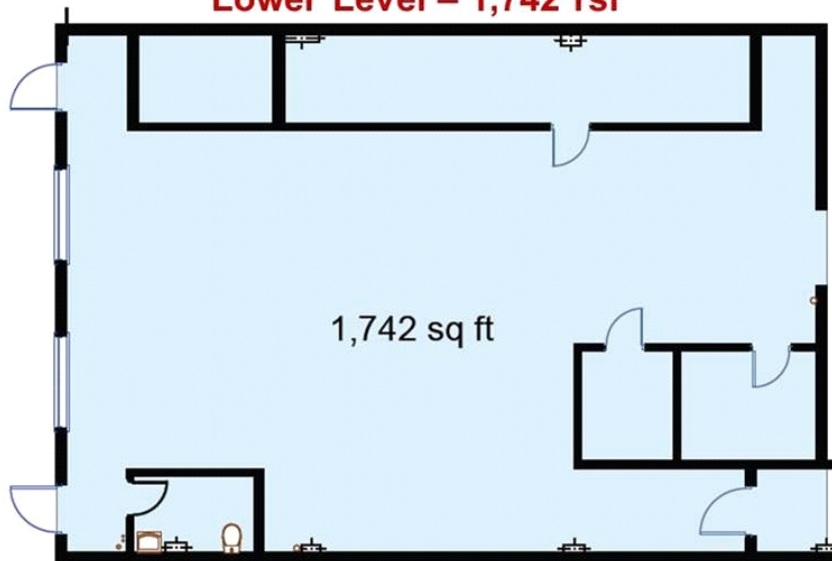
White Plains, New York



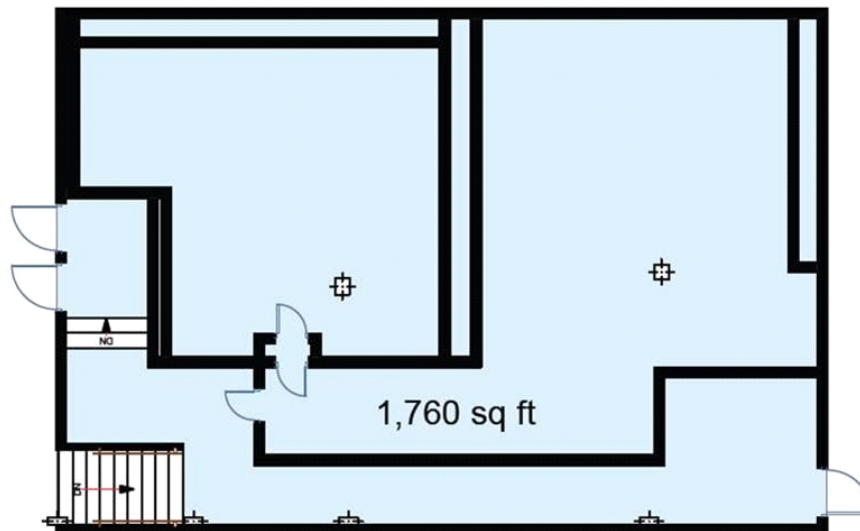
Main Building Level – 962 rsf



Lower Level – 1,742 rsf



Basement Level – 1,760 rsf



**Newmark Grubb
Knight Frank**

Retail

Patricia A. Valenti Principal 203.531.3601 pvalenti@ngkf.com